

CRAFT BEER Havens | ARCHITECTURAL Award Winners | Shazam's RICH RILEY **cptv**

CONNECTICUT

connecticutmag.com

MAGAZINE

SUMMER DINING WITH A VIEW

Dining destinations across the state where
the view is as great as what's on the plate.

Red 36, Mystic

JULY 2015 \$4.95



ACCESSORY BUILDING WINNER

Limonaia on a Country Estate

As the latest project in a nearly two-decade parade of beautiful constructions on one Greenwich property, Limonaia on a Country Estate proves splendor is possible in even small buildings.

Charles Hilton Architects of Greenwich has had an ongoing relationship with the homeowner, building structure after structure to realize a grand European plan. The original home is built in a Georgian style, the second property is distinctly French Normandy and the latest additions harken back to Italy. This most recent project, quaintly named Limonaia on a Country Estate, falls into the Italian portion and acts as a home to the homeowner's citrus trees during the winter.

"There was another building on that footprint before—a long skinny structure," explains Charles Hilton. "It made sense for the project because we needed lots of glass, and it needed to face south."

Hilton and his team built a long, low structure reminiscent of an Italian Palladian villa that is divided into three different spaces—a central greenhouse, a work space and a gateway between two different areas of the property.

Tucked away in the estate's gardens, the Limonaia looks out over a serene meadow. It is constructed of rusticated stonework with graduated slate roofs. Two Doric columns, the capitals inscribed with the phrases, "A day in a garden" and "A day in paradise," frame the entryway from the spacious terrace designed by landscape artist Charles Stick of Charlottesville, N.C., into the central pavilion. The details of the Limonaia echo the other buildings on the estate.

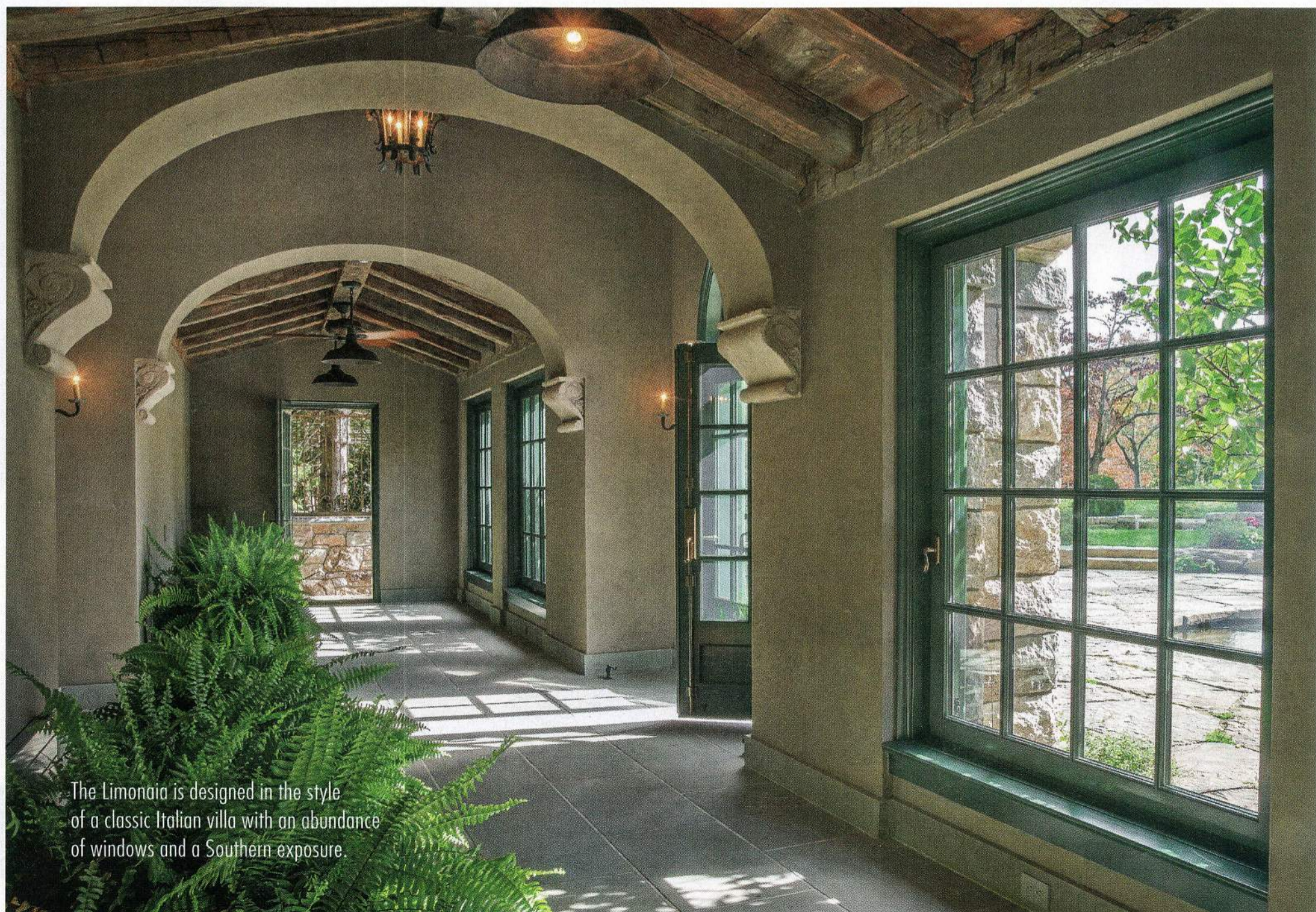
"We wanted to do something nice and Old Worldly," Hilton says. "The details and materials were used in other buildings. The tim-

bers are similar to what we used elsewhere. We wanted to give it its own identity but it had to relate."

The bronze work, which was designed and crafted by Jozef Wipkowski of Aesthetic Blacksmithing in Bridgeport, defines the citrus greenhouse and sets it apart from the estate's other buildings. Handcrafted bronze gates with arched lunette panels feature fruit-laden lemon branches, offering an artistic nod to the building's functionality.

"The bronze work is just beautiful," says Hilton, which is a comment the Alice Wash-

| CONTINUED ON PAGE 34 |



The Limonaia is designed in the style of a classic Italian villa with an abundance of windows and a Southern exposure.

OUR BEST IS YET TO COME!

18th
Annual

best of

CONNECTICUT

OVER 100 WINNERS THIS YEAR

Start your subscription
order by August 5th
to receive the
September 2015,
Best Of Connecticut[®]
issue as part of
your regular subscription.

Call Toll Free 855-235-9032
or order online at
connecticutmag.com/new

CONNECTICUT
MAGAZINE

| Washburn |

CONTINUED FROM PAGE 27

burn jurors certainly agreed with.

"This project touches on several design points: it is clear, simple and beautiful, with exceptional materiality, detailing and craftsmanship," the jurors said in their comments. "It is a folly, but has a purpose: it is the ultimate gift to the arts, in that the client was willing to engage an architect and artisans to realize and put forth a classical folly."

ACCESSORY BUILDING HONORABLE MENTION

Canoe Hill Barn

Lofted on a hill above a 9.5-acre New Canaan property, the Canoe Hill Barn offers a striking silhouette against the sky complete with an assertive wind turbine. Authenticity was paramount in this restoration project, which transformed a traditional 160-year-old barn into a pool house and gathering space.

Originally a 1850s dairy barn, the building was turned into a storage space over the years. Through it all, the building's interior remained intact and charming. The current homeowners wanted to honor the property's history but make the barn livable, and since it didn't have any insulation, heat or electricity, significant upgrades were needed.

Austin Patterson Disston Architects of Southport took great pains to preserve the building's character while updating it. The project was led by firm partner McKee Patterson and project architect Marti Cowan.

The property did not have a historic designation, so there wasn't any formal process to move through with a historic district or architectural review board. Still, the architec-



THIS PAGE AND OPPOSITE: JEFF MCNAMARA