

GOODS
ON THE FRINGE

SHOP TALK
DESIGN NEWS

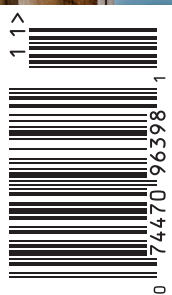
LAST WORD
A-LIST JUDGES

athome

IN FAIRFIELD COUNTY



\$5.95
NOV/DEC 2021
athomefc.com



A-List Awards Issue

YOUR ULTIMATE DESIGN GUIDE

Going Global



above: The living space with its play of textures and Arabesque influences.

There are living rooms, and then there are rooms you just want to live in. With grand gestures and a global influence, this living space by Charles Hilton Architects is definitely the latter. And that dreamy palette that plays with pale blues, grays and creams? It's enough to make you sigh with relief as you sink into the cushions of that overstuffed couch and rest your feet on the plush gray rug. But before getting into the global

influences, you first have to travel to the past. It's impossible to guess that this graceful space was once built on the prior garage of a 1920s English-Georgian-Colonial hybrid, formerly part of a Rockefeller homestead. Hilton completely gutted the oddly proportioned rooms—knocking down walls, ripping up floors and reworking the existing low concrete ceiling—to carve out a more open and light-flooded space which connects to the rest of the house. The team fought the instinct to bedeck the living space in an English cottage style, which is a go-to trope for period homes with

PHOTOGRAPHY BY ROBERT
BENSON PHOTOGRAPHY



left: An elliptical archway leads to the breakfast room. **below:** A closer look at the pilaster and archway, which add architectural interest.



PROFESSIONALS

Architect

Charles Hilton, Principal
Daniel Parry,
Associate Partner and Project Manager
Charles Hilton Architects
@charleshiltonarchitects
Greenwich; 203-489-3800
hiltonarchitects.com

Interior Designer

Miles Redd
Redd Kaihoi
New York City; 212-674-0902
reddkaihoi.com

Contractor

Robert Levine
Home Construction
New Canaan; 203-594-7663

Lighting Designer

Gary Novasel
Patdo Light Studio
Port Chester, NY; 914-937-6707
patdolight.com

this architecture, and instead cranked up the youthful energy. A vibrant Arabesque wallcovering selected by interior designer Miles Redd whisks the clients away to further shores. The vibrancy offers a floral and flowing counterpoint to the stately elliptical archway that leads to the kitchen and breakfast room. The same global spirit also graces two commissioned paintings of Babylonian scenes by Tim Kent that are windows to far-off lands, all while an arched doorway invites you to explore the lands right outside. — BY NATHAN TAVARES



Classic Beauty

PROFESSIONALS

Architect

Charles Hilton, Principal
Daniel Parly, Associate
Partner and Project Manager
Charles Hilton Architects
@charleshiltonarchitects
Greenwich; 203-489-3800
hiltonarchitects.com

Interior Designer

Miles Redd
Redd Kaihoi
New York City; 212-674-0902
reddkaihoi.com

Contractor

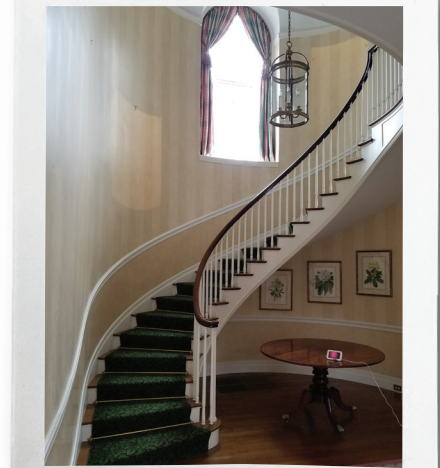
Robert Levine
Home Construction
New Canaan; 203-594-7663

Lighting Designer

Gary Novasel
Patdo Light Studio
Port Chester, NY; 914-937-6707
patdolight.com



above: Post-renovation, the façade of the home retains its classic country manor design; **left:** A custom mural, commissioned by the designer, makes a showstopping statement in the entry hall (pictured below, prior to renovation).



PHOTOGRAPHY BY ROBERT BENSON PHOTOGRAPHY



right: Before (below) and after views of the sunroom; The walls and ceiling were covered in green wallpaper that evokes a tented oasis.



A

young couple loved their 1920's English-Georgian-Colonial hybrid house on a parcel that had once been part of a Rockefeller homestead, but it needed some updating and TLC. While they wanted to keep the home's English country vibe, the owners wished to infuse some vitality and fun into its traditional style. Enter Charles Hilton Architects and designer Miles Redd, who updated floor plans and utilized bright colors and hints of global influences to bring this home into the current century while keeping it true to its origins.

Hilton's team tackled several maintenance projects, including updating the insulation and glazing as well as matching and replacing the original slate roof tiles. They reconfigured a highly-trafficked wing over the former garage, gutting several dark, cramped rooms, and reconstructed them to create a larger, more open and comfortable family living space. The

breakfast area was also reworked, and a new Dutch door and bay window were installed to reveal garden views.

In the sun room, the team removed heavy pilasters on the walls to showcase the graceful arched ceiling and also rebuilt the bar, updating it with a thick Calacatta marble top, brass sink and fixtures. Just outside the adjacent dining room, a classical pergola was built to encourage al fresco dining and entertaining.

Renowned designer Miles Redd put his eclectic stamp on the interiors, adding bold flourishes and bright colors throughout. Favorite features include the two-story woodland mural in the foyer and the family room wallpaper, which includes elaborate Arabesque arches.

This project was a labor of love and an exercise in blending old with new, meeting the primary goal of the clients and turning this estate into a beautiful legacy for generations to enjoy.

—MALIA MCKINNON FRAME



left: The exterior breakfast room ("before" pictured above) wall was extended and an expansive bay window installed to transform this space into a cheery room bathed in sunlight.

shoptalk

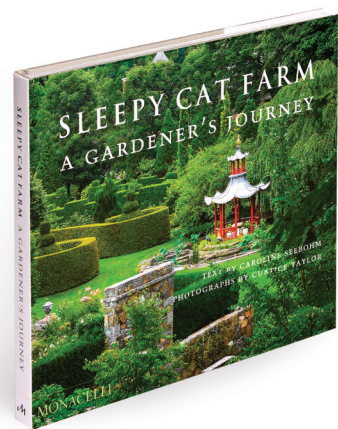
THE LATEST DESIGN NEWS



left: A wisteria arbor in full bloom provides a canopy over the Chippendale-style bench, which overlooks the boxwood cat maze. **right:** The garden beds, home to delicious, organic vegetables.

MAKING A MASTERPIECE

A NEW BOOK CHRONICLES THE INSPIRED VISION OF SLEEPY CAT FARM IN GREENWICH BY VERONICA SCHORR



Sleepy Cat Farm: A Gardener's Journey; \$50. Monacelli Press, November 2, 2021; sleepycatfarm.com/book

Gracefully lulling over 13 immaculate acres is one of Greenwich's most iconic estates: Sleepy Cat Farm. A passion project of Fred Landman since acquiring the property in 1994, the farm draws on European and Asian influences and the thoughtful planning of Greenwich architect Charles Hilton.

Garden spaces and buildings with names like The Golden Path and The Celestial Pavilion evoke the atmosphere of the farm: a fully immersive experience of contemplation, appreciation and solitude—with plenty of benches to help in that end. But Landman, with the help of his wife Seen Lippert, an accomplished professional chef, wanted to do more than create a garden with majesty. In

the spirit of sharing the farm's bounty, they provide fresh, organic produce to the surrounding community. The owners are also committed to instilling public awareness of horticulture and landscape architecture through hosting charitable events and garden tours. As Landman says, "One of my greatest joys is when other people come here and get to experience what I experience every day. The most important thing is that they leave happy."

Sleepy Cat Farm: A Gardener's Journey recounts the transformation of Landman's Georgian Revival home and its grounds by Hilton and landscape architect Charles J. Stick.

Hilton, one of Greenwich's (and the industry's) notable architects, says working on Sleepy Cat Farm was one of

the most unique projects in his career. "Twenty-seven years ago, we began working with Fred on the estate that would eventually become Sleepy Cat Farm. What began as a renovation to the main house blossomed into 10 different projects that span across the 13-acre property and vary greatly in style from Georgian, to French Normandy, to Italian neoclassical."

The renovation projects ran the full gamut of challenges you'd expect when reviving old buildings, says Hilton: "The primary challenge was creating an aesthetic that was collectively cohesive with the other buildings, the bucolic landscape and the interiors, while simultaneously allowing each building to have its own unique identity."

What sets Sleepy Cat Farm apart from other estates is its dedicated and visionary mission. "The comprehensiveness of Fred's vision and the consistency and thoroughness of his approach to integrate architecture, landscape architecture, interior design and the culinary and fine arts into one exceptional place is a rare and very joyful experience."

His proudest moment? "The French Normandy main house, because of its uniqueness, comfortable wide-open spaces and its integration with the surrounding landscape."

PHOTOGRAPHY BY CURTICE TAYLOR