

MARCH 2011

LUXURY HOME

quarterly

WILD WEST

American Desert Homes

CHEN + SUCHART STUDIO
brings refined living to rugged terrain

+ A PEEK INSIDE *Shanna Bender's*
mod-chic living space and home office



Top Architectural Elements of the Gardener's Cottage

To revive this French-style country farm for garden enthusiasts in Greenwich, CT, Hilton-VanderHorn Architects drew upon the following French Norman elements:

1. **Greenhouse:** Framed with metal, this structure possesses the strength and durability required for ample vegetation and a limitless number of hanging plants;
2. **Cottage:** Real hand-hewn timber gives the structure an authentic and handcrafted look;
3. **Slate roof:** The roof is made of graduated slates, which gives scale and visual height to the small cottage;
4. **Environmental integration:** Integration between the site and the building is key. The building walls that extend to surround the garden blend the cottage harmoniously with the surrounding landscape.

Hilton-VanderHorn Architects

RECREATING TRADITIONAL, HIGH-END ARCHITECTURE FOR THE MODERN WORLD

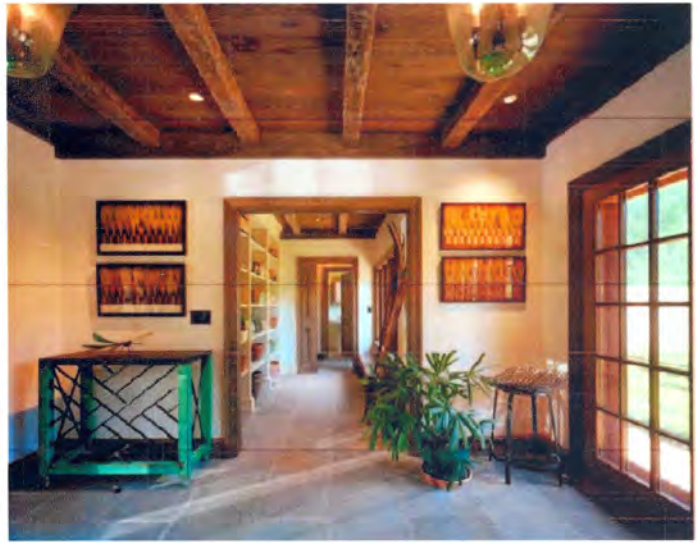
by *Kaleena Thompson*

Traditional architecture speaks in lovely proportions, classic lines, and sophisticated scale and style when fashioned by 21st-century visionaries Chuck Hilton and Douglas VanderHorn of Hilton-VanderHorn Architects.

Thanks to a dedicated clientele, the firm flourishes, creating high-end, traditionally inspired architecture tailored for the modern world. "We strive to identify a stylistic direction for each project that harmoniously addresses the client's lifestyle, [the] project's context, and functional requirements," Hilton says. In business for more than 20 years, the Greenwich, Connecticut-based firm has earned a distinguished reputation throughout Connecticut and New York.

In addition to Hilton's founding partner Douglas VanderHorn, the firm is composed of 14 employees: associate partners, multi-talented architects, and an experienced office staff. "Our in-house team members have backgrounds in construction, green building, and historic preservation, which give rise to our distinctive projects," Hilton says. He also credits the firm's top-notch network of consultants, which includes landscape architects, decorators, and engineers. "We are more collaborative than most firms, which allows us to beautifully execute the client's vision regardless of how specialized the request might be."

Projects run from 3,000-square-foot, historically sensitive renovations and additions to



GARDEN GREETING

The potting room (left) of this French-country cottage looks out over the vegetable garden. The ceiling's oak planking and beams hang above French plaster walls. The cabinetry has a distressed finish with CaesarStone countertops (caesarstoneus.com). The entry room (right) welcomes visitors with flagstone flooring, and the lighting fixtures, art, and furniture are all garden-themed.

12,000-square-foot, traditionally inspired new constructions. Hilton-VanderHorn's substantial investment in design and quality has attracted imaginative clients who bring their own ideas to each project. As a result, the firm's projects are unique and distinctive but also well planned, comfortable, and functional.

Recently, garden enthusiasts hired the firm to renovate and add to their four-acre French-country farm. "There were three existing buildings on the property, which we refer to as the studio, the gardener's cottage, and the main house," Hilton says. The firm remodeled the studio and the cottage and then added a greenhouse to support the couple's interest in organic farming. The greenhouse maintains ideal growing conditions year-round with the help of a sophisticated and largely automated climate-control system.

The main house was recently taken down and replaced with a new French country barn-style house that serves as the primary abode. "The building had a rundown French aesthetic, so we preserved its French country influences with stone, stucco, timber, and slate finishes," Hilton says. The architecture is also flexible—the cottage set up to function as a caretaker's quarters or guest accommodations.

For an active family that wants an outdoor cooking and living space, a stone-clad porch with a kitchen might be in order. "We worked on the

house 18 years ago, and the current homeowners asked us to do some renovations and additions," Hilton says. The clients requested that the luxury designers craft a covered outdoor kitchen. Framed of stone, the 16-by-20-foot entertainment porch features a stainless-steel grill and hood, a Douglas fir ceiling, a paddle fan, Italian patio furniture, and a fireplace to warm guests on cool Connecticut nights.

In Westchester's elite suburb of Bronxville, New York, a family desired a seasonal guesthouse for entertaining family and friends. Hilton-VanderHorn designed a functional guesthouse adjacent to the Colonial-style main house. Fashioned for summer gatherings but easily transformed for extended stays in the winter, it features two large entertainment spaces, four bedrooms, multiple baths, and changing rooms for pool-side excursions. Hilton adds that with its symmetrical front, stone finishings, and formal entryway, the mini-Colonial guesthouse is at home with the other charming houses in the neighborhood.

Although well versed in their craft, Hilton and VanderHorn were not originally educated in traditional architecture. Yet, as college classmates they shared an affinity for the timeless forms, fine materials, and quality craftsmanship of traditional design. "When we were in college, the curriculum for architecture was modernism," Hilton says. However, Hilton and VanderHorn taught themselves about period architecture and

high-end design with inspiration from architect figureheads such as Edwin Lutyens, Charles Platt, and David Adler. "I find their work relevant and inspiring today," he says. "We just hope to continue to build traditional homes with the same enduring character." ■

A MESSAGE FROM ARTISTIC DOORS AND WINDOWS

Artistic Doors and Windows congratulates Hilton-VanderHorn Architects on their many past, present, and future successes. We are honored to be a key trusted vendor supplying quality products, service, and support to many of this great firm's esteemed residences. We look forward to our continued partnership.

A MESSAGE FROM SCHWARTZ'S FORGE & METALWORKS, INC

Schwartz's Forge & Metalworks, Inc. is committed to artistic and technical excellence. The company provides complete design services or collaborates with other design professionals. Thirty-five years of experience and research have given this company a national reputation. Through sensitive application of traditional black-smithing and modern metal-fabrication techniques, client expectations are exceeded. Skilled artisans make quality and attention to detail a priority. For more information please call 315.841.4477 or visit www.schwartzsforge.com